

European Beech

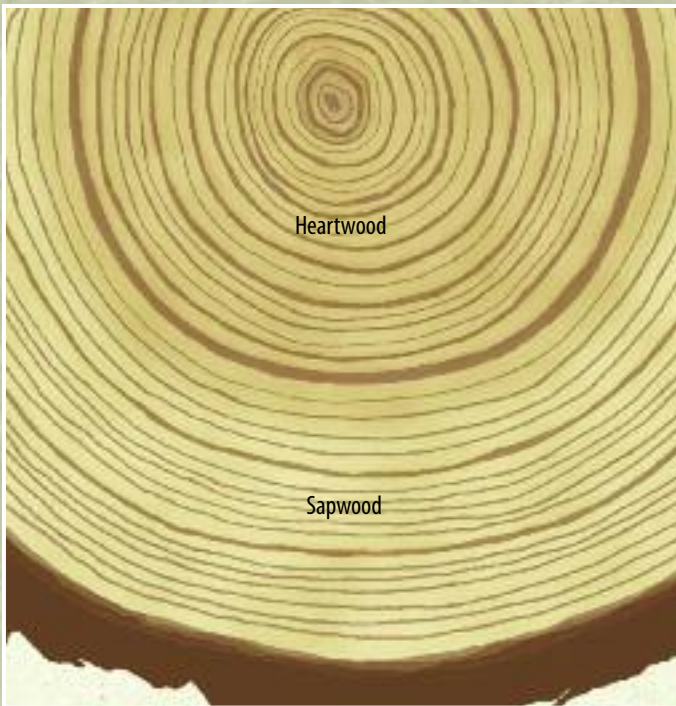


European Steamed Beech is a plentiful, sustainable, carefully managed species that makes up a majority of the hardwood forests in Europe. Beech has been widely used in European furniture and cabinetry for generations, and offers durability similar to that of Oak, with a grain pattern that is often compared to Maple. Due to its flexibility, Beech has become increasingly popular for use in high-end furniture, cabinetry, flooring and millwork. We offer Beech as a standard wood species in both our framed and frameless cabinetry lines.



The History of Beech

Beech has been popular for centuries for a variety of uses. Because it gives off no odor or taste, it is often carved into food containers and items such as platters, cups and ladles. Known as “tree,” these small wooden items are highly collectible. Beech has also been used for toys and musical instruments.



Beech tends to show very little difference in the appearance of the heartwood and sapwood, which makes the overall color of the wood more consistent.



Color and Grain Pattern

One of the most unique properties of Beech is the way the appearance of the grain pattern changes with different stain colors. Shown above from top to bottom are Natural, Pecan and Java. Note how different characteristics of the grain pattern, such as ray flecks, are revealed with a light to medium-colored stain.

Characteristics of Beech

Beech is a strong hardwood with a density similar to Maple. This straight-grained wood displays the durability of Oak with a more consistent grain pattern.

Knots and irregular grain may be present in Beech, but are generally kept to a minimum. The grain pattern reflects the growth rings that mark the growth rate of the individual tree, so the width and spacing of the grain pattern will be

different on each piece of wood.

The overall look of Beech is fairly consistent, and the color will vary from light to mid-tone brown, with intermittent dark brown heartwood streaks.

When light to medium-colored stains are used, grain patterns and ray flecks will be more prominent. Darker stains will subdue the color variations and enhance the grain pattern.

Since 1981, we have been a recognized leader in the kitchen and bath industry, and have been recognized for our environmental practices. Our finish process is designed to greatly reduce air pollutants, and we continually explore new ways to further reduce electricity and natural gas usage through process improvements and equipment upgrades.