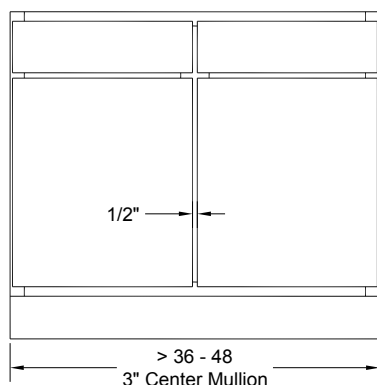


# Overlay Options by Door Style

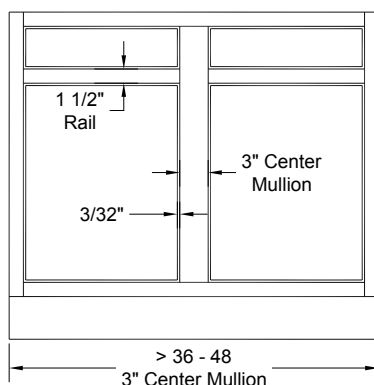
## MODIFIED



**Modified** doors and fronts overlay the frame 1/2" on the top and bottom and 1-1/4" on each side, leaving a 1" reveal top and bottom, and a 1/4" reveal on each side of the face frame.

Aberdeen	Copenhagen	Halifax / Plycore	Norwood / Solid	Stratford Roman
Alpine	Coventry	Hampton	Prescott Solid	Trio / Solid
Belmont / Solid	Dover / Plycore	Hanover	Quattro / Solid	Tuscany
Brentwood / Solid	Duet / Solid	Houston / Solid	Quincy / Solid	Valley Forge / Solid
Brentwood Roman / Solid	Emerson	Kennedy / Solid	Ridgecrest	Windsor
Canterbury	Equinox / Solid	Kingston Solid	Roanoke / Solid	Windsor Roman
Cape Cod Solid	Fairfax	Lancaster	Shaker / Solid	Winterset
Carlsbad / Solid	Falmouth / Solid	Lynden / Solid	Shaker Ctr. / Solid	Winterset Roman
Catalina	Galloway / Solid	Monterey	Shalimar	
Charleston	Garrison	Monticello / Solid	Shalimar Roman	
Chatham / Solid	Gettysburg / Solid	Mount Vernon	Silhouette	
Concord / Solid	Glacier Bay	Newport	Springwood	
Cortina / Solid	Glacier Bay Rom.	Normandy / Solid	Stratford	

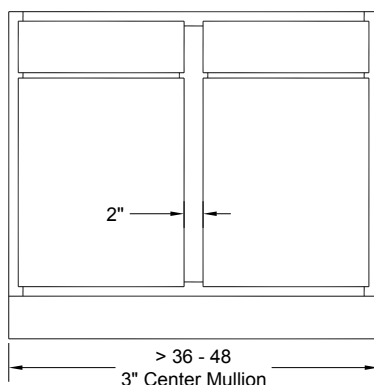
## INSET/BEADED INSET



**Inset** doors and fronts do not overlay face frame. They are set between stiles and rails of frame, flush with front. The gap between doors or fronts and face frame is 3/32" on all sides.

Aberdeen	Concord / Solid	Hampton	Norwood / Solid	Stratford Roman
Belmont / Solid	Cortina / Solid	Houston / Solid	Prescott Solid	Valley Forge / Solid
Brentwood / Solid	Coventry	Kennedy / Solid	Quattro / Solid	Windsor
Brentwood Roman / Solid	Duet / Solid	Kingston Solid	Ridgecrest	Windsor Roman
Canterbury	Emerson	Lynden / Solid	Shaker / Solid	
Cape Cod Solid	Equinox / Solid	Monterey	Shaker Ctr. / Solid	
Carlsbad / Solid	Fairfax	Monticello / Solid	Shalimar	
Catalina	Falmouth / Solid	Mount Vernon	Shalimar Roman	
Charleston	Garrison	Newport	Springwood	
Chatham / Solid	Gettysburg / Solid	Normandy / Solid	Stratford	

## TRADITIONAL



Athens	Legend	Princeton
Athens Roman	Legend Roman	Shaker (N/A for Center or Solid)

Available in Traditional overlay only. | Shaker styles also offered with Modified and Inset options.

**Traditional** doors and fronts overlay the cabinet frame 1/2" on each side, leaving a 1" reveal on the top, bottom and sides of the face frame.