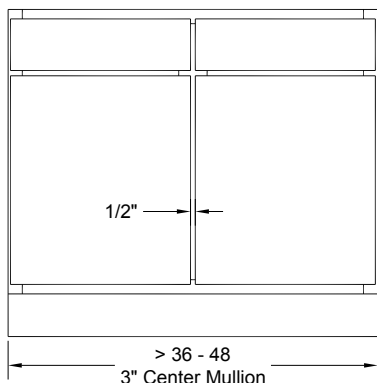


Overlay Options by Door Style

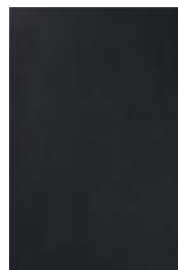
MODIFIED



Modified doors and fronts overlay the frame 1/2" on the top and bottom and 1-1/4" on each side, leaving a 1" reveal top and bottom, and a 1/4" reveal on each side of the face frame.



Aberdeen



Alpine



Belmont / Solid



Brentwood / Solid



Brentwood Rom./Solid



Canterbury



Cape Cod Solid



Carlsbad / Solid



Catalina



Charleston



Chatham / Solid



Concord / Solid



Copenhagen



Cortina / Solid



Coventry



Dover / Plycore



Duet / Solid



Emerson



Equinox / Solid



Fairfax



Falmouth / Solid



Galloway / Solid



Garrison



Gettysburg / Solid



Glacier Bay



Glacier Bay Roman



Halifax / Plycore



Hampton



Hanover

Includes arched and center variations

Overlay Options by Door Style

MODIFIED



Houston / Solid



Kennedy / Solid



Kingston Solid



Lancaster



Lynden / Solid



Monterey



Monticello / Solid



Mount Vernon



Newport



Normandy / Solid



Norwood / Solid



Prescott Solid



Quattro / Solid



Quincy / Solid



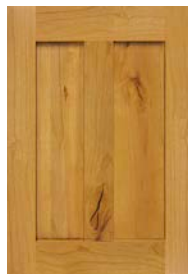
Ridgecrest



Roanoke / Solid



Shaker / Solid



Shaker Center/Solid



Shalimar



Shalimar Roman



Silhouette



Springwood



Stratford



Stratford Roman



Trio / Solid



Tuscany



Valley Forge / Solid



Windsor



Windsor Roman



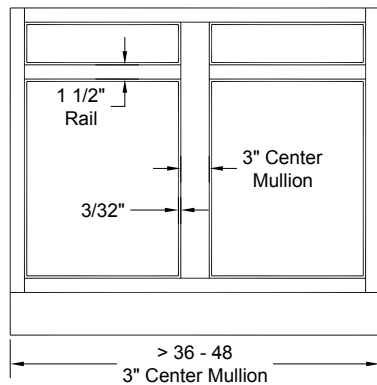
Winterset



Winterset Roman

Overlay Options by Door Style

INSET/BEADED INSET



Inset doors and fronts do not overlay face frame. They are set between stiles and rails of frame, flush with front. The gap between doors or fronts and face frame is 3/32" on all sides.



Aberdeen



Belmont / Solid



Brentwood / Solid



Brentwood Rom./Solid



Canterbury



Cape Cod Solid



Carlsbad / Solid



Catalina



Charleston



Chatham / Solid



Concord / Solid



Cortina / Solid



Coventry



Duet / Solid



Emerson



Equinox / Solid



Fairfax



Falmouth / Solid



Garrison



Gettysburg / Solid



Hampton



Houston / Solid



Kennedy / Solid



Kingston Solid



Lynden / Solid



Monterey



Monticello / Solid

Overlay Options by Door Style

INSET/BEADED INSET



Mount Vernon

Newport

Normandy / Solid

Norwood / Solid

Prescott Solid

Quattro / Solid

Ridgecrest



Shaker / Solid

Shaker Center/Solid

Shalimar

Shalimar Roman

Springwood

Stratford

Stratford Roman

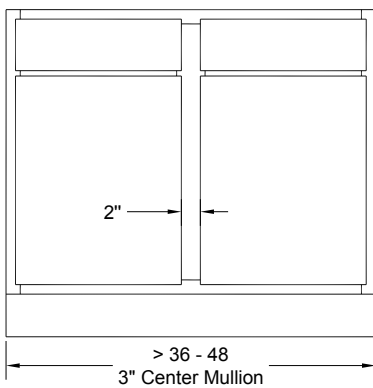


Valley Forge / Solid

Windsor

Windsor Roman

TRADITIONAL



Traditional doors and fronts overlay the cabinet frame 1/2" on each side, leaving a 1" reveal on the top, bottom and sides of the face frame.

These styles are available in Traditional overlay only.

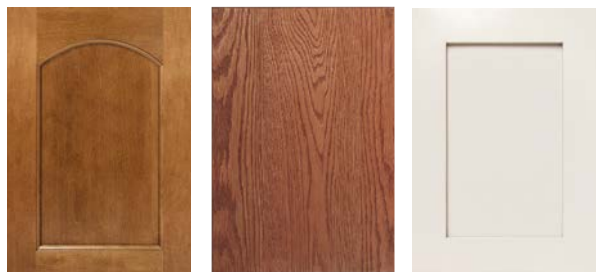
Shaker Traditional is not available with Solid or Center options. Those styles are offered with Modified and Inset overlays.



Athens

Athens Roman

Legend



Legend Roman

Princeton

Shaker