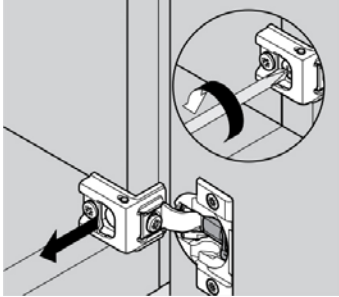
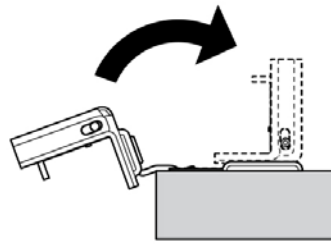


CORNERSTONE | Blum Hinge Angle Restriction Clip

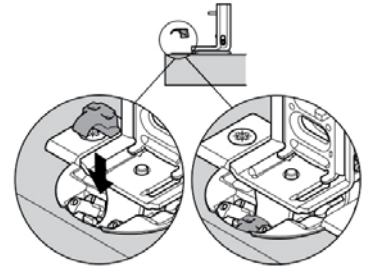
Step 1 - Remove door
Loosen and remove the installation screws.



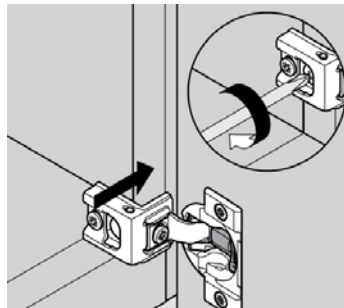
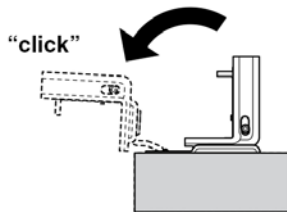
Step 2 - Rotate hinge arm
Rotate hinge arm to closed position (listen for "click").



Step 3 - Insert clip
Insert angle restriction clip into the base of the hinge arm.



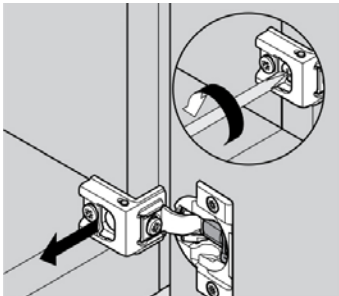
Step 4 - Rotate hinge arm
Rotate hinge arm to open position to secure ("click").



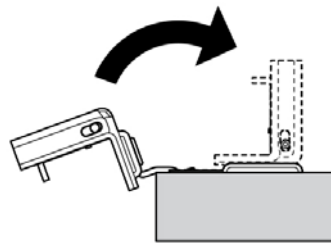
Step 5 - Reattach door
Align door and reattach by inserting and tightening installation screws.

MILLENNIA | Blum Hinge Angle Restriction Clip

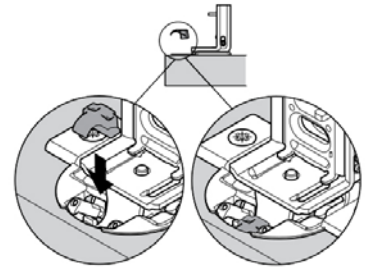
Step 1 - Remove door
Loosen and remove the installation screws.



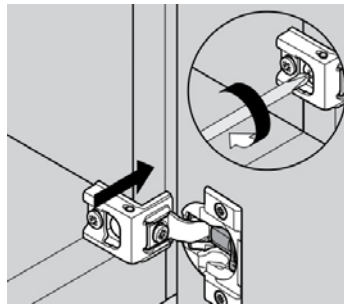
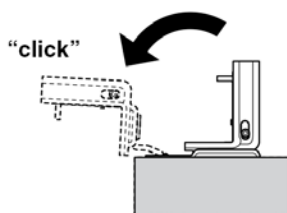
Step 2 - Rotate hinge arm
Rotate hinge arm to closed position (listen for "click").



Step 3 - Insert clip
Insert angle restriction clip into the base of the hinge arm.



Step 4 - Rotate hinge arm
Rotate hinge arm to open position to secure ("click").



Step 5 - Reattach door
Align door and reattach by inserting and tightening installation screws.